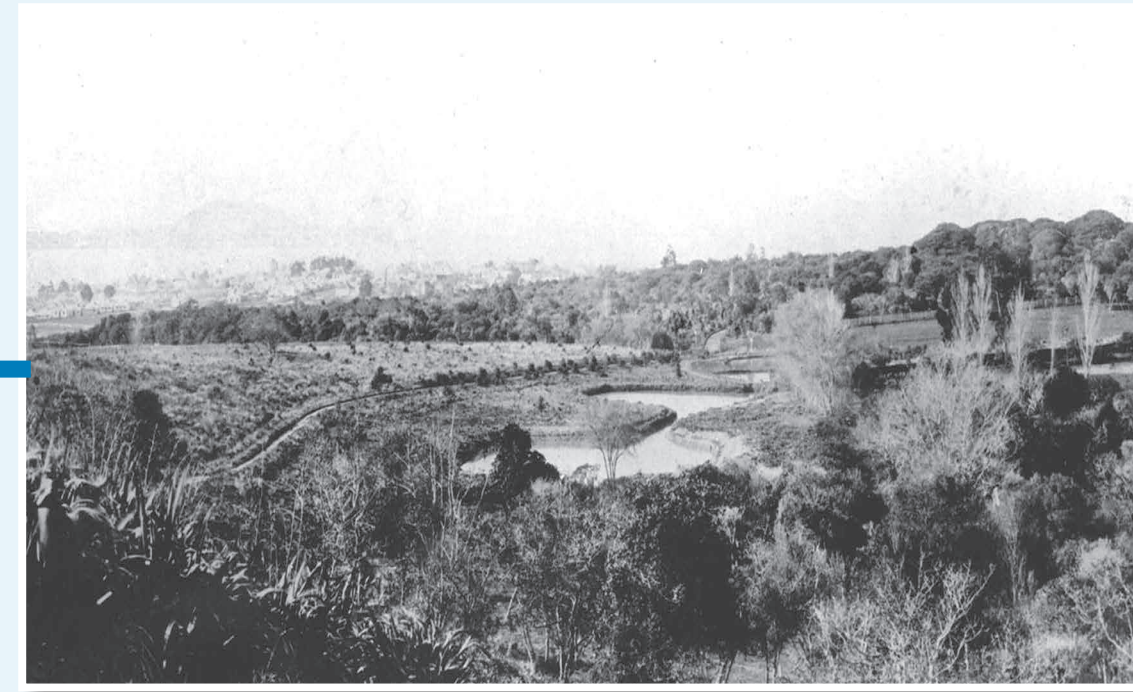


# History of Auckland's water supply

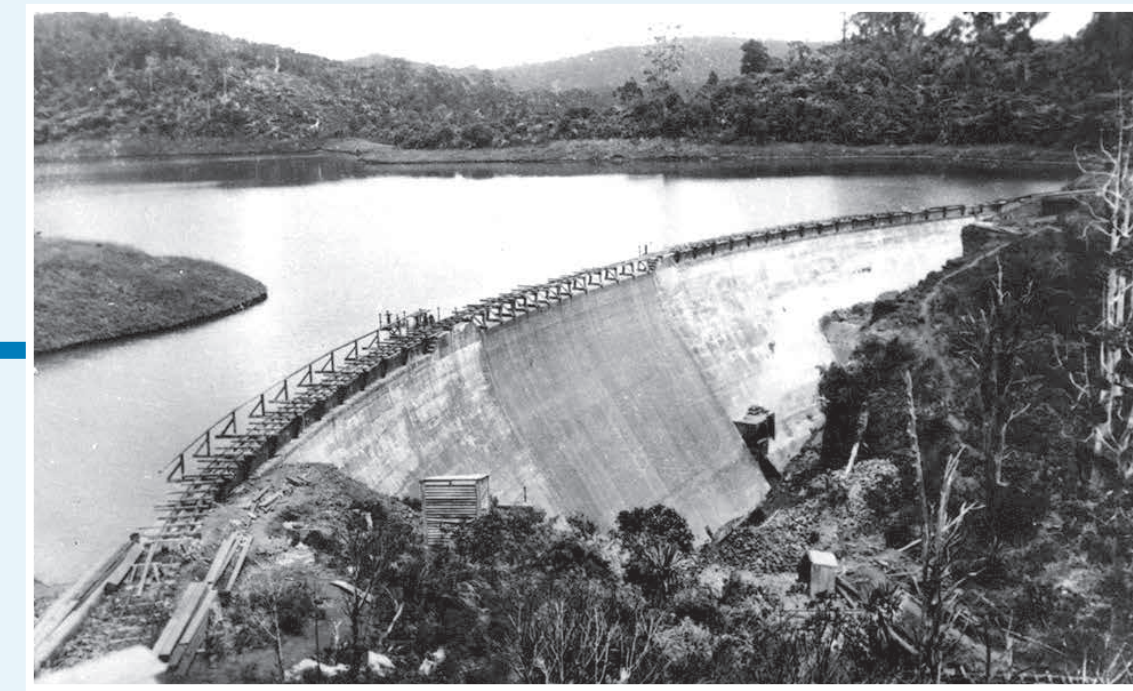
**1866**  
Auckland Domain



**1877**  
Western Springs



**1910-1971**  
Western dams



*Waitakere Dam*

**1927**  
\*Waitakere and Nihotupu filtration stations

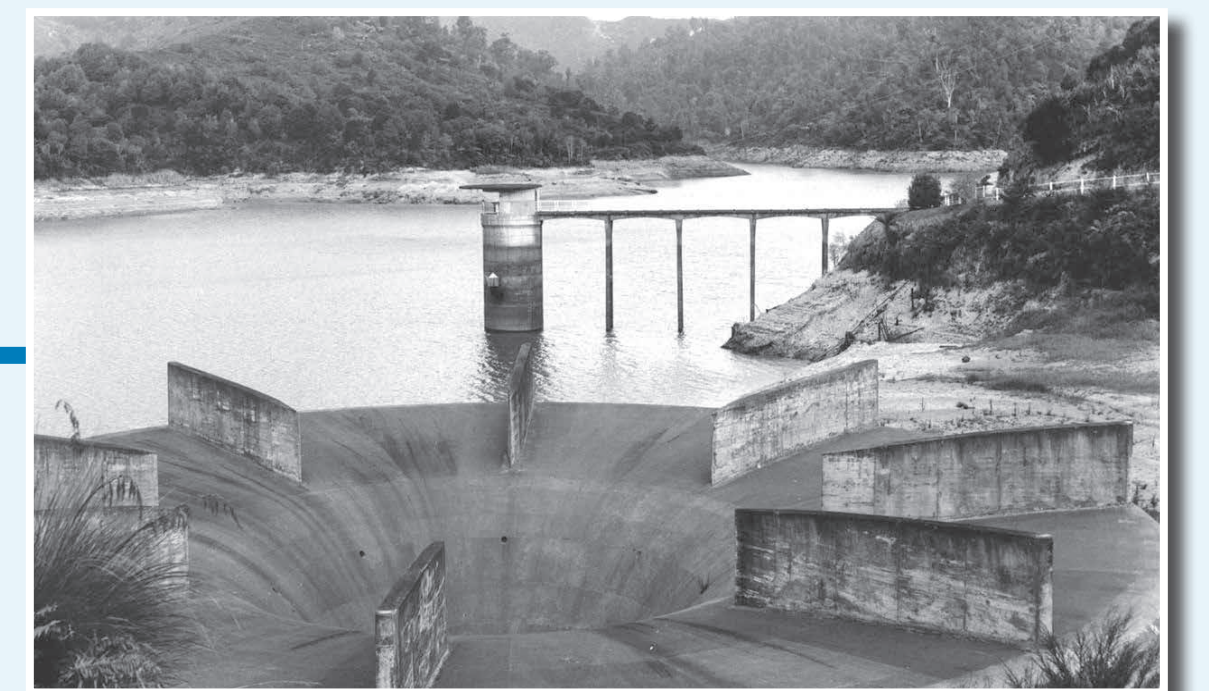


*Waitakere Filtration Station during construction*

**1928**  
\*Huia Filtration Station built



**1955-1977**  
Southern dams



*Cosseys Dam*

**1956**  
\*Ardmore Filtration Station



*Ardmore Filtration Station during construction*

**1990**  
\*Nihotupu Filtration Station closed



**2002**  
Waikato Water Treatment Plant



\*Filtration station known today as a water treatment plant.